



Engineering & Recycling Solution

TRASERSCREEN DB-100



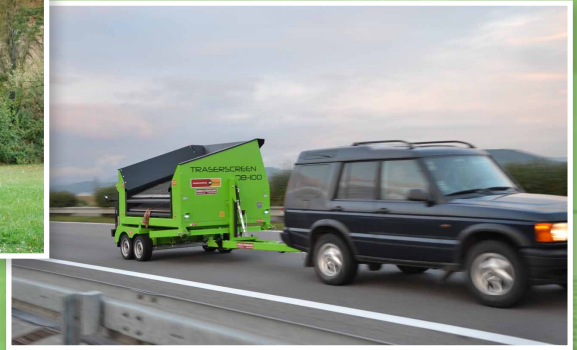
Basic Features:

- The most productive and economical screener in its class
- From transport position to fully operational under 4 minutes
- Tried and tested in the toughest environments

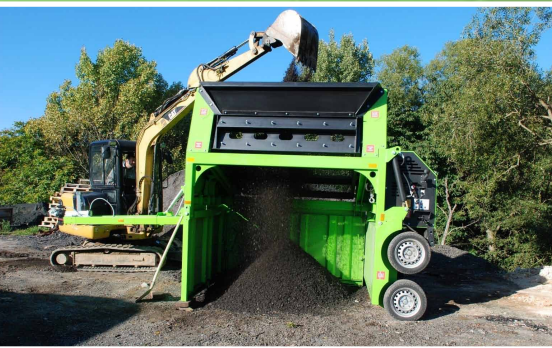
„The small screener with the big heart“

How it looks:

Transport position



Working position



How it works:

The TRASERSCREEN DB 100 is the most maneuverable and productive screener of its size on the market.

With its large (6ft x 6ft) screen-box and screening area of 3.3m² (36ft²) it is capable of screening up to 100 ton per hour (depending on material). With its weight which is up to 2,8 t It can be easily towed by any SUV or VAN car.

With amazing set up time of less than 4 minutes it gets to work fast and is capable of running on less than 0,7 gallons / 3 liters of diesel per hour. Therefore making great saving for the operator on both time and money.

It is the screening solution for many operators, ground works contractors, landscaping, small sand or gravel pit owners, waste processing companies, golf courses, paving companies and utilities companies.

It is designed to screen the following products:

- Top soil
- Sand & gravel
- Crushed rock
- Crushed asphalt
- Coal
- Builders rubble
- Compost
- Shredded wood



DB Engineering

Engineering & Recycling Solution

TRASERSCREEN DB 100

TECHNICAL SPECIFICATIONS:

Powered by: 10hp Diesel Engine
Transport length: 4640 mm (15,22 ft)
Transport width: 2146 mm (7,04 ft)
Transport height: 2350 mm (7,7 ft)
Working operational height: 2870 mm (9,4 ft)
Screenbox length: 1820 mm (6 ft)
Screenbox width: 1820 mm (6 ft)
Fuel tank capacity: 26 L

All specifications subject to change
without prior notice.

DB Engineering, s.r.o.

Námestie SNP 7
Trenčín 911 01
Slovakia
Phone: +421 911 391 885
E-mail: info@dbengineering.sk
www.dbengineering.sk

